

Issue No.	5	A2CFL
Issue Dt.	2022.04.02	
Doc. Rev. No.	0	
Doc. Rev. Dt.	-	
MATERIAL OF TERMINAL - ALUMINIUM ALLOY GRADE 4600 CONFORMING IS 617-1994 (LM-6). MATERIAL OF NUT, BOLT, PLAIN WASHER - MILD STEEL HOT DIP GALVANISED. SPRING WASHER SPRING STEEL ELECTRO GALVANISED.		
TERMINAL SUITABLE FOR ≤ 245 kV		

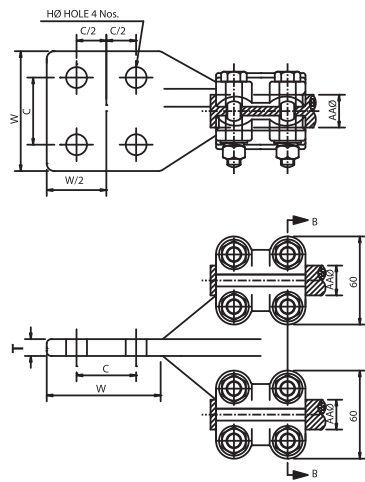


FIG-II

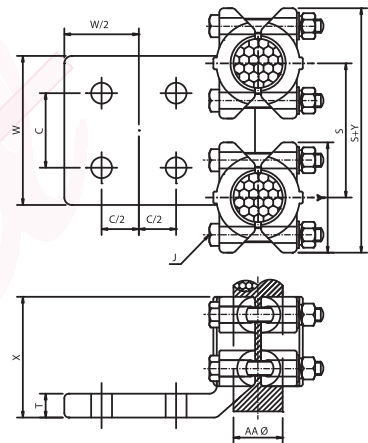
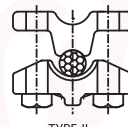
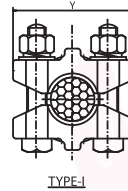
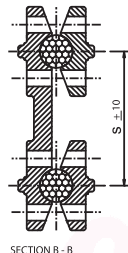


FIG-I

H
H1=11Ø
H2=14Ø
H3=18Ø

C	
C1=25.0	C4=44.5
C2=32.0	C5=50.0
C3=40.0	C6=55.0
C9=CUSTOM MADE	

W
W1=80
W2=100
W3=120

S		
S00=100	S3=225	S6=330
S0=110	S4=250	S7=350
S1=140	S41=280	S79=390
S2=200	S5=300	S8=400
		S9=450

CATALOG NO.	FIG. TYPE		CONDUCTOR RANGE	DIMENSIONS-mm.			
			AA Ø mm.	X	T	Y	J
A2CFL-6	II	II	10.00 - 16.00	73	12	60	10
A2CFL-7	II	I	16.00 - 18.05	73	12	60	10
A2CFL-9	II	I	18.00 - 22.26	73	12	60	10
A2CFL-11B	I	I	22.00 - 26.00	81	20	74	10

B-30/31, Nand Bhuvan Industrial Estate, Mahakali Caves Road, Andheri (E), Mumbai 400 093, INDIA

Phone: 91-22-2821 3764, 2831 3764 Fax: 91-22-2835 2795

E-mail : sales@exalt.co.in Web site : https://exalt.co.in/



ALUMINIUM 90 DEGREE PAD TERMINAL TWIN CONDUCTORS TO FLAT 90 DEGREE

Issue No.	5	A2CFL
Issue Dt.	2022.04.02	
Doc. Rev. No.	0	
Doc. Rev. Dt.	-	

CATALOG NO.	TYPE FIG.		CONDUCTOR RANGE	DIMENSIONS-mm.			
			AA Ø mm.	X	T	Y	J
A2CFL-11C	I	I	26.00 - 28.13	81	20	74	10
A2CFL-13B	I	I	28.00 - 30.15	81	20	74	10
A2CFL-13C	I	I	30.00 - 32.00	81	20	74	10
A2CFL-15B	I	I	32.00 - 34.00	102	25	84	10
A2CFL-15C	I	I	34.00 - 37.00	102	25	84	10
A2CFL-15D	I	I	37.00 - 40.00	102	25	84	10
A2CFL-16B	I	I	40.00 - 43.00	102	25	94	10
A2CFL-16C	I	I	43.00 - 46.63	107	30	94	10

NOTE:

- PLEASE ADD SUFFIX H1, H2, H3 AS REQUIRED FOR DIAMETER OF 4 HOLES H DIA. IN THE TERMINAL FOR e.g. CATALOG NO. OF TERMINAL FOR CONDUCTOR DIA.10.0 TO 16.0mm. WITH 14mm. HOLE DIA IS A2CFL-6_H2.
- PLEASE ADD SUFFIX C1,C2----C9 AS REQUIRED FOR CENTRE TO CENTRE DISTANCE OF 4 HOLE IN THE TERMINAL PAD. IN CASE OF CUSTOM MADE PLEASE SPECIFY NUMERICAL VALUE FOR e.g.
FOR STANDARD ITEMS:
 CATALOG NO. OF TERMINAL FOR CONDUCTOR DIA. 10.0 TO 16.0mm. WITH 14mm HOLE DIA. HOLE TO HOLE CENTRE 50mm. IS A2CFL-6_H2_C5.
FOR CUSTOM MADE:
 CATALOG NO. OF TERMINAL FOR CONDUCTOR DIA. 10.0 TO 16.0mm. WITH 14mm HOLE DIA. HOLE TO HOLE CENTRE 42mm. IS A2CFL-6_H2_42.
- PLEASE ADD SUFFIX W1, --W3 AS REQUIRED FOR WIDTH OF TERMINAL. e.g. CATALOG NO. OF TERMINAL FOR CONDUCTOR DIA. 10.0 TO 16.0 mm. WITH 14mm. HOLE DIA. HOLE TO HOLE CENTRE 50mm. TERMINAL WIDTH 80mm. IS A2CFL-6_H2_C5_W1.
- VALUES IN THE CATALOG IS SUITABLE FOR W=80mm. VALUES WILL DIFFER IF W CHANGES.

B-30/31, Nand Bhuvan Industrial Estate, Mahakali Caves Road, Andheri (E), Mumbai 400 093, INDIA
 Phone: 91-22-2821 3764, 2831 3764 Fax: 91-22-2835 2795
 E-mail : sales@exalt.co.in Web site : <https://exalt.co.in/>



ALUMINIUM 90 DEGREE PAD TERMINAL

TWIN CONDUCTORS TO FLAT 90 DEGREE

Issue No.	5	A2CFL
Issue Dt.	2022.04.02	
Doc. Rev. No.	0	
Doc. Rev. Dt.	-	

- 5) PLEASE ADD SUFFIX SS FOR CLAMPS WITH STAINLESS STEEL NUT BOLTS e.g. CATALOG NO. OF TERMINAL FOR CONDUCTOR DIA. 10.0 TO 16.0mm. WITH 14mm. HOLE DIA. HOLE TO HOLE CENTRE 50mm. TERMINAL WIDTH 80mm. WITH STAINLESS STEEL NUT BOLTS IS A2CFL-6_H2_C5_W1_SS.
- 6) PAD MOUNTING HARDWARE IS OBTAINED FROM CATALOG TYPES EHBG, EHNG, EHFG, EHWG FOR GALVANISED SCREWING HARDWARES. AND EHBS, EHNS, EHCNS, EHFS, EHWS FOR STAINLESS STEEL SCREWING HARDWARES.

B-30/31, Nand Bhuvan Industrial Estate, Mahakali Caves Road, Andheri (E), Mumbai 400 093, INDIA

Phone: 91-22-2821 3764, 2831 3764 Fax: 91-22-2835 2795

E-mail : sales@exalt.co.in Web site : <https://exalt.co.in/>