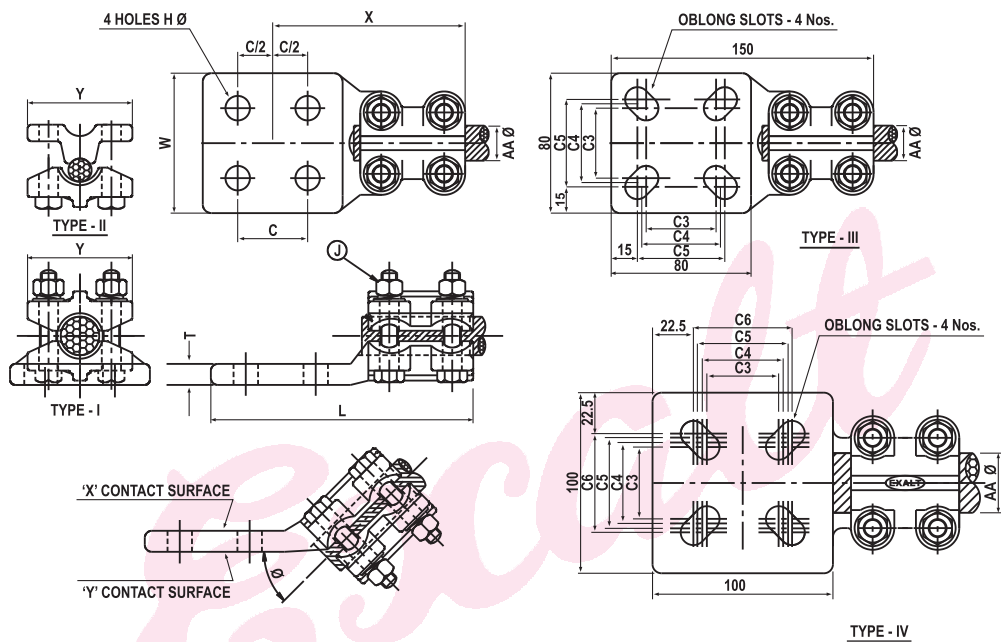




**ALUMINIUM STRAIGHT BOLT TERMINAL
CONDUCTOR TO FLAT**

Issue No.	5	EACF
Issue Dt.	2022.04.02	
Doc. Rev. No.	0	
Doc. Rev. Dt.	-	
MATERIAL OF TERMINAL - ALUMINIUM ALLOY GRADE 4600 CONFORMING IS 617-1994 (LM-6). MATERIAL OF NUT, BOLT, PLAIN WASHER - MILD STEEL HOT DIP GALVANISED SPRING WASHER SPRING STEEL ELECTRO GALVANISED		
TERMINALSUITABLE FOR ≤ 245 kV		



H	C	W	Ø
H1=11Ø H2=14Ø H3=18Ø	C1=25.0 C2=32.0 C3=40.0 C4=44.5 C5=50.0	C6=55.0 C7=40.0,44.5,50.0 C8=40.0,44.5,50.0,55.0 (OBLONG SLOTS) C9=CUSTOM MADE	W1=80 W2=100 W3=120 W4=CUSTOM MADE
			Ø1=45° Ø2=90°

CATALOG NO.	TYPE	CONDUCTOR RANGE		DIMENSIONS-mm.				
		AA Ø	mm.	L	X	T	Y	J
EACF-6	II,III	10.00	— 16.00	150	110	12	60	10
EACF-7	I,III	16.00	— 18.05	150	110	12	60	10
EACF-9	I,III	18.00	— 22.26	150	110	12	60	10
EACF-11B	I,IV	22.00	— 26.00	150	110	12	74	10
EACF-11C	I,IV	26.00	— 28.13	150	110	12	74	10
EACF-13B	I,IV	28.00	— 30.15	150	110	12	74	10
EACF-13C	I,IV	30.00	— 32.00	150	110	12	74	10
EACF-15B	I,IV	32.00	— 34.00	170	130	14	84	10
EACF-15C	I,IV	34.00	— 37.00	170	130	14	84	10

B-30/31, Nand Bhuvan Industrial Estate, Mahakali Caves Road, Andheri (E), Mumbai 400 093, INDIA

Phone: 91-22-2821 3764, 2831 3764 Fax: 91-22-2835 2795

E-mail : sales@exalt.co.in Web site : <https://exalt.co.in/>





ALUMINIUM STRAIGHT BOLT TERMINAL CONDUCTOR TO FLAT

Issue No.	5	EACF
Issue Dt.	2022.04.02	
Doc. Rev. No.	0	
Doc. Rev. Dt.	-	

CATALOG NO.	TYPE	CONDUCTOR RANGE		DIMENSIONS-mm.				
		AA Ø	mm.	L	X	T	Y	J
EACF-15D	I,IV	37.00	— 40.00	170	130	14	84	10
EACF-16B	I,IV	40.00	— 43.00	170	130	16	94	10
EACF-16C	I	43.00	— 46.63	170	130	16	94	10

NOTE:

- PLEASE ADD SUFFIX H1, H2, H3 AS REQUIRED FOR DIAMETER OF 4 HOLES H DIA. IN THE TERMINAL FOR e.g. CATALOG NO. OF TERMINAL FOR CONDUCTOR DIA.10.0 TO 16.0 mm. WITH 14 mm HOLE DIA IS EACF-6_H2
- PLEASE ADD SUFFIX C1,C2---C9 AS REQUIRED FOR CENTRE TO CENTRE DISTANCE OF 4 HOLE IN THE TERMINAL PAD. IN CASE OF CUSTOM MADE PLEASE SPECIFY NUMERICAL VALUE FOR e.g.

FOR STANDARD ITEMS :

CATALOG NO. OF TERMINAL FOR CONDUCTOR DIA. 10.0 TO 16.0 mm WITH 14mm HOLE DIA. HOLE TO HOLE CENTRE 50mm. IS EACF-6_H2_C5

FOR CUSTOM MADE ITEMS :

CATALOG NO. OF TERMINAL FOR CONDUCTOR DIA. 10.0 TO 16.0 mm WITH 14mm HOLE DIA. HOLE TO HOLE CENTRE 42mm IS EACF-6_H2_42

- PLEASE ADD SUFFIX W1, W2--W4 AS REQUIRED FOR WIDTH OF TERMINAL. e.g. CATALOG NO. OF TERMINAL FOR CONDUCTOR DIA. 10.0 TO 16.0 mm WITH 14mm HOLE DIA. HOLE TO HOLE CENTRE 50mm. TERMINAL WIDTH 80mm. IS EACF-6_H2_C5_W1
- ANGLE CONNECTORS MAY BE OBTAINED BY SPECIFYING DESIRED ANGLE AND CONTACT SURFACE AS ILLUSTRATED. ADD CONTACT SURFACE LETTER AND REQUIRED ANGLE TYPE e.g. CATALOG NO. OF TERMINAL FOR CONDUCTOR DIA. 10.0 TO 16.0 mm WITH 14mm HOLE DIA. HOLE TO HOLE CENTRE 50mm. TERMINAL WIDTH 80mm. CONDUCTOR TAKEOFF ANGLE 45° IS EACF-6_H2_C5_W1_X01.
- VALUES IN THE CATALOG IS SUITABLE FOR W=80mm VALUES WILL DIFFER IF W CHANGES.
- PLEASE ADD SUFFIX SS FOR CLAMPS WITH STAINLESS STEEL NUT BOLTS e.g. CATALOG NO. OF TERMINAL FOR CONDUCTOR DIA. 10.0 TO 16.0 mm WITH 14mm HOLE DIA. HOLE TO HOLE CENTRE 50mm. TERMINAL WIDTH 80mm. WITH STAINLESS STEEL NUT BOLTS IS EACF6_H2_C5_W1_SS
- PAD MOUNTING HARDWARE IS OBTAINED FROM CATALOG TYPES EHBG, EHNG, EHFG, EHWG FOR GALVANISED SCREWING HARDWARES. AND EHBS, EHNS, EHCNS, EHFS, EHWS FOR STAINLESS STEEL SCREWING HARDWARES.

B-30/31, Nand Bhuvan Industrial Estate, Mahakali Caves Road, Andheri (E), Mumbai 400 093, INDIA

Phone: 91-22-2821 3764, 2831 3764 Fax: 91-22-2835 2795

E-mail : sales@exalt.co.in Web site : <https://exalt.co.in/>