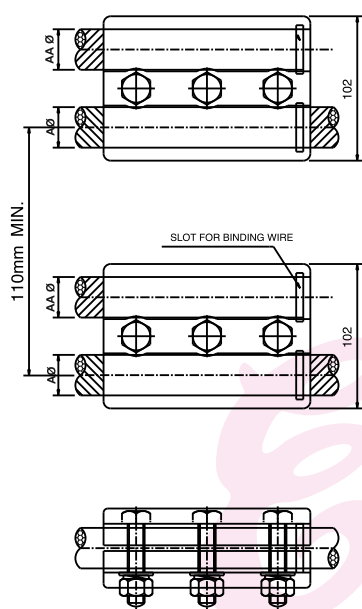
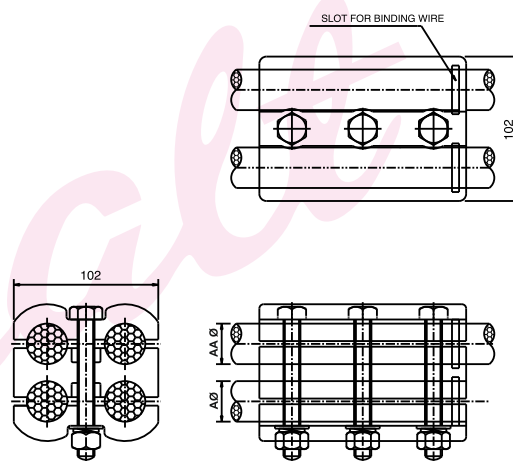


Issue No.	3	A2CPG
Issue Dt.	02.01.15	
Doc. Rev. No.	0	
Doc. Rev. Dt.	-	
MATERIAL OF P.G.CLAMP - ALUMINIUM ALLOY GRADE 4600 CONFORMING IS-617 1994 (LM-6). MATERIAL OF NUT, BOLT PLAIN WASHER - MILD STEEL HOT DIP GALVANISED. SPRING WASHER SPRING. STEEL ELECTRO GALVANISED.		
P.G.CLAMP SUITABLE FOR ≤ 245 kV		



TYPE-I



TYPE-II

CATALOG NO.	RUN CONDUCTOR RANGE		TAP CONDUCTOR RANGE		DIMENSIONS-mm.
	AØ.	mm.	AA Ø.	mm.	
A2CPG-6		10.00 - 16.00		10.00 - 16.00	10
A2CPG-7		10.00 - 16.00		16.00 - 18.05	10
A2CPG-8		10.00 - 16.00		18.00 - 22.26	10
A2CPG-9		10.00 - 16.00		22.00 - 26.00	12
A2CPG-10		10.00 - 16.00		26.00 - 28.13	12
A2CPG-11		10.00 - 16.00		28.00 - 30.15	12

B-30/31, Nand Bhuvan Industrial Estate, Mahakali Caves Road, Andheri (E), Mumbai 400 093. INDIA.
Phone : 91-22-2821 3764, 2831 3764 Fax : 91-22-2835 2795
E-mail : exalt@vsnl.com, sales@exalt.co.in • web site : www.exalt.co.in



ALUMINIUM CAST PARALLEL GROOVE CLAMP TWIN CABLES TO TWIN CABLES

Issue No.	3	A2CPG
Issue Dt.	02.01.15	
Doc. Rev. No.	0	
Doc. Rev. Dt.	-	

C

CATALOG NO.	RUN CONDUCTOR RANGE		TAP CONDUCTOR RANGE		DIMENSIONS-mm.	
	AØ.	mm.	AA Ø.	mm.	J	
A2CPG-12	10.00	16.00	30.00	32.00	12	
A2CPG-16	16.00	18.05	22.00	26.00	12	
A2CPG-17	16.00	18.05	26.00	28.13	12	
A2CPG-18	16.00	18.05	28.00	30.15	12	
A2CPG-19	16.00	18.05	30.00	32.00	12	
A2CPG-23	18.00	22.26	22.00	26.00	12	
A2CPG-24	18.00	22.26	26.00	28.13	12	
A2CPG-25	18.00	22.26	28.00	30.15	12	
A2CPG-26	18.00	22.26	30.00	32.00	12	
A2CPG-30	22.00	26.00	22.00	26.00	12	
A2CPG-31	22.00	26.00	26.00	28.13	12	
A2CPG-32	22.00	26.00	28.00	30.15	12	
A2CPG-33	22.00	26.00	30.00	32.00	12	
A2CPG-34	22.00	26.00	32.00	34.00	12	
A2CPG-35	22.00	26.00	34.00	37.00	16	
A2CPG-36	22.00	26.00	37.00	40.00	16	
A2CPG-37	22.00	26.00	40.00	43.00	16	
A2CPG-38	22.00	26.00	43.00	46.63	16	
A2CPG-43	26.00	28.13	26.00	28.13	12	
A2CPG-44	26.00	28.13	28.00	30.15	12	
A2CPG-45	26.00	28.13	30.00	32.00	12	
A2CPG-46	26.00	28.13	32.00	34.00	12	
A2CPG-47	26.00	28.13	34.00	37.00	16	
A2CPG-48	26.00	28.13	37.00	40.00	16	
A2CPG-49	26.00	28.13	40.00	43.00	16	
A2CPG-50	26.00	28.13	43.00	46.63	16	
A2CPG-56	28.00	30.15	28.00	30.15	12	
A2CPG-57	28.00	30.15	30.00	32.00	12	
A2CPG-58	28.00	30.15	32.00	34.00	12	
A2CPG-59	28.00	30.15	34.00	37.00	16	
A2CPG-60	28.00	30.15	37.00	40.00	16	
A2CPG-61	28.00	30.15	40.00	43.00	16	

B-30/31, Nand Bhuvan Industrial Estate, Mahakali Caves Road, Andheri (E), Mumbai 400 093. INDIA.
Phone : 91-22-2821 3764, 2831 3764 Fax : 91-22-2835 2795
E-mail : exalt@vsnl.com, sales@exalt.co.in • web site : www.exalt.co.in



ALUMINIUM CAST PARALLEL GROOVE CLAMP TWIN CABLES TO TWIN CABLES

C

Issue No.	3	A2CPG
Issue Dt.	02.01.15	
Doc. Rev. No.	0	
Doc. Rev. Dt.	-	

CATALOG NO.	RUN CONDUCTOR RANGE		TAP CONDUCTOR RANGE		DIMENSIONS-mm.
	AØ.	mm.	AA Ø.	mm.	
A2CPG-62	28.00	30.15	43.00	46.63	16
A2CPG-69	30.00	32.00	30.00	32.00	12
A2CPG-70	30.00	32.00	32.00	34.00	12
A2CPG-71	30.00	32.00	34.00	37.00	12
A2CPG-72	30.00	32.00	37.00	40.00	16
A2CPG-73	30.00	32.00	40.00	43.00	16
A2CPG-74	30.00	32.00	43.00	46.63	16
A2CPG-82	32.00	34.00	32.00	34.00	12
A2CPG-83	32.00	34.00	34.00	37.00	16
A2CPG-84	32.00	34.00	37.00	40.00	16
A2CPG-85	32.00	34.00	40.00	43.00	16
A2CPG-86	32.00	34.00	43.00	46.63	16
A2CPG-98	34.00	37.00	34.00	37.00	16
A2CPG-99	34.00	37.00	37.00	40.00	16
A2CPG-100	34.00	37.00	40.00	43.00	16
A2CPG-101	34.00	37.00	43.00	46.63	16
A2CPG-111	37.00	40.00	37.00	40.00	16
A2CPG-112	37.00	40.00	40.00	43.00	16
A2CPG-113	37.00	40.00	43.00	46.63	16
A2CPG-124	40.00	43.00	40.00	43.00	16
A2CPG-125	40.00	43.00	43.00	46.63	16
A2CPG-137	43.00	46.63	43.00	46.63	16

NOTE:

- 1) PLEASE ADD SUFFIX SS FOR CLAMPS WITH STAINLESS STEEL NUT BOLTS FOR e.g. CATALOG NO. OF 43.00/46.63 TO 43.00/46.63 WITH STAINLESS STEEL NUT BOLTS IS A2CPG-137_SS.
- 2) FOR TYPE - II PLEASE ADD SUFFIX ITEM CODE “_II” FOR EXAMPLE FOR TYPE - II PARALLEL GROOVE FOR TWO CONDUCTORS TO SUIT CONDUCTOR DIA 30.00 - 32.00mm. TO 30.00 - 32.00mm CATALOGUE NO. WILL BE OR IS A2CPG-69_II.

B-30/31, Nand Bhuvan Industrial Estate, Mahakali Caves Road, Andheri (E), Mumbai 400 093. INDIA.
Phone : 91-22-2821 3764, 2831 3764 Fax : 91-22-2835 2795
E-mail : exalt@vsnl.com, sales@exalt.co.in • web site : www.exalt.co.in